

Manual Supplement

Manual Title: 6100B/6105A Getting Started	Supplement Issue: 2
Part Number: 3499347	Issue Date: 12/14
Print Date: September 2009	Page Count: 3
Revision/Date: 1, 6/10	

This supplement contains information necessary to ensure the accuracy of the above manual.

Change #1

On page 23, replace Figure 13, with:

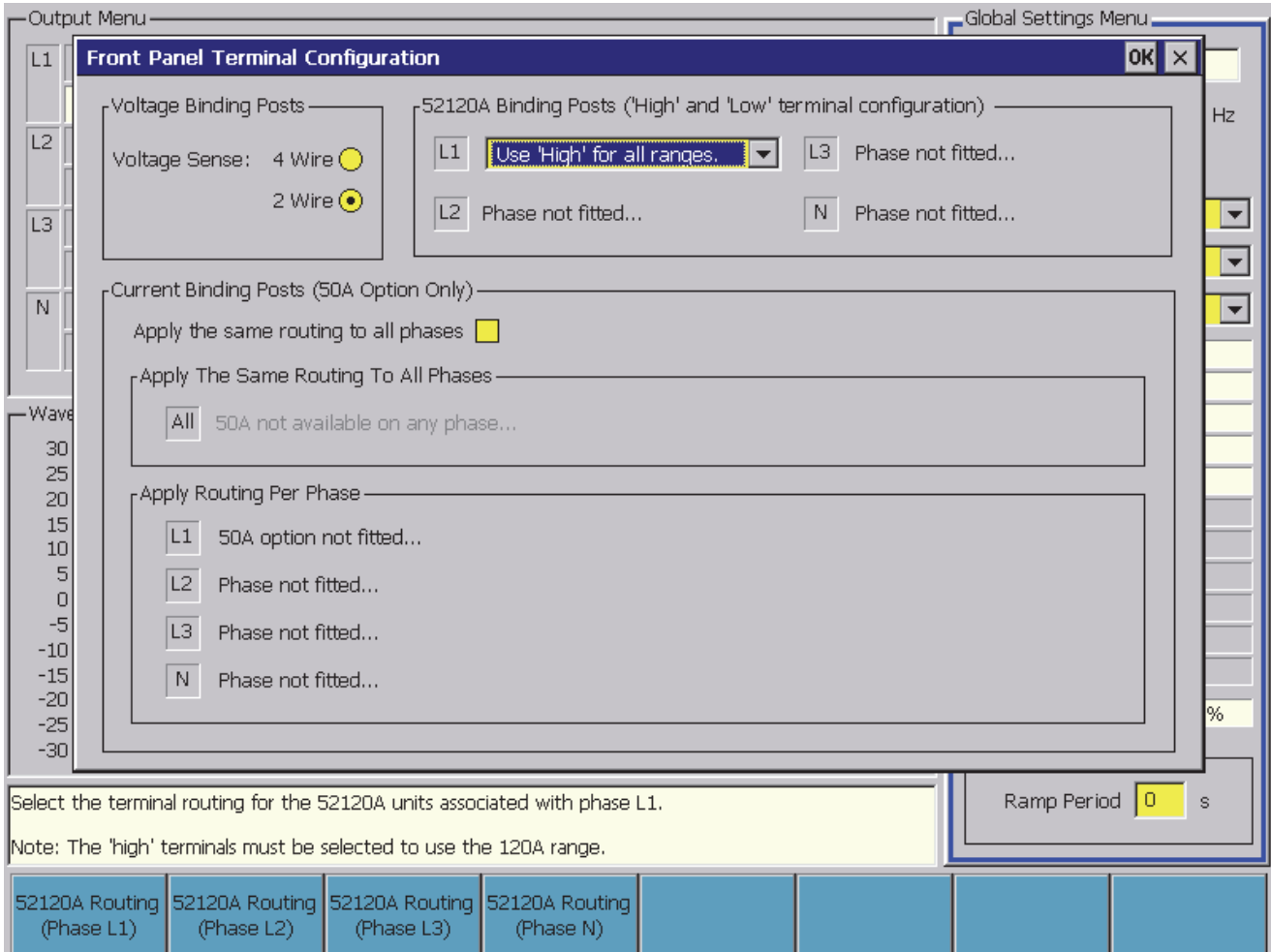
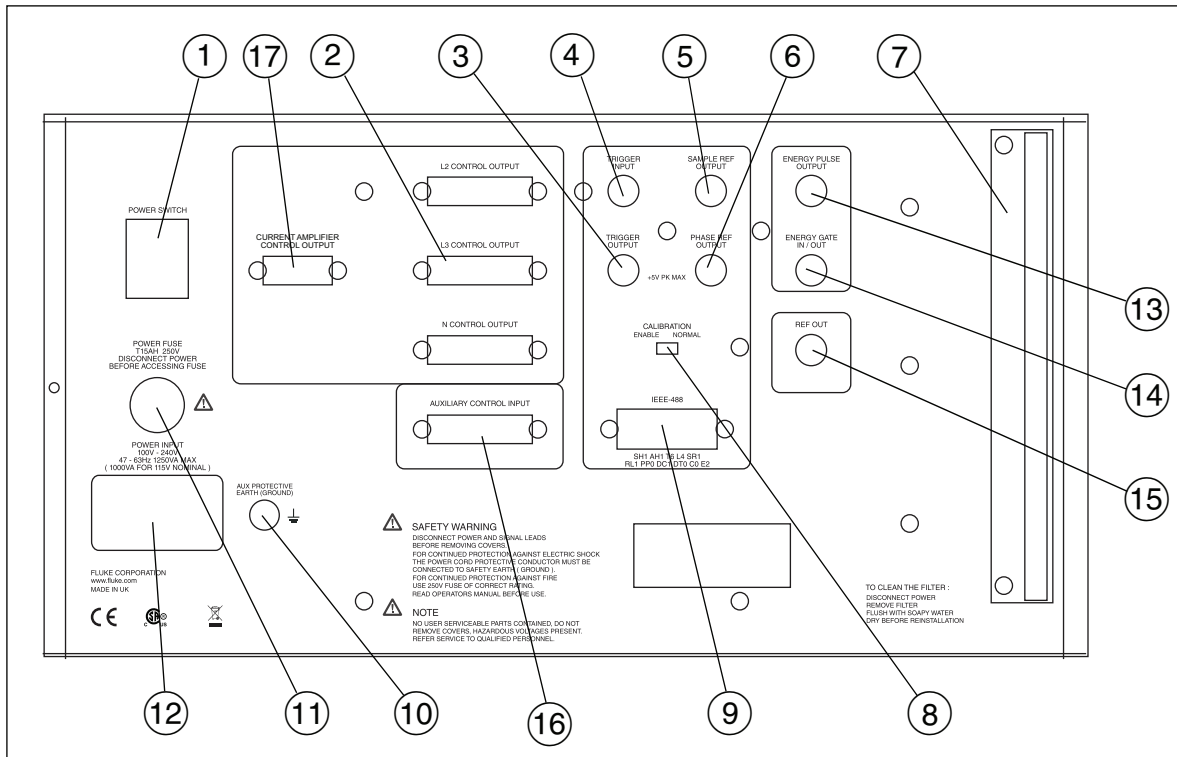


Figure 13. Front-Panel Terminal Configuration

gdw43.bmp

On page 24, replace Figure 14, with:



gdw07.eps

Figure 14. Rear-Panel Features

On page 25, Table 4, add:

17	52120A Current Amplifier Control Output connection.
----	---

Change #2, 428

On page 3, add the following to the **Symbols** table:

	Conforms to relevant South Korean EMC Standards
---	---

On page 7, replace **Environment** and **EMC** with:

Environment

Operating temperature	5 °C - 35 °C
Calibration temperature (tcal) range	16 °C - 30 °C
Storage temperature	0 °C - 50 °C
Transit temperature	-20 °C - 60 °C <100 hours
Warm up time	1 hour
Safe operating max. relative humidity (non-condensing)	<80 % 5 °C - 31 °C ramping linearly down to 50 % at 35 °C
Storage max. relative humidity (non-condensing)	<95 % 0 °C - 50 °C
Operating altitude	0 m - 2,000 m
Non-operating altitude	0 m - 12,000 m
Shock	MIL-PRF-28800F class 3
Vibration	MIL-PRF-28800F class 3
Enclosure	MIL-PRF-28800F class 3
Electromagnetic Compatibility (EMC)	<p>IEC 61326-1: (Controlled EM Environment); CISPR 11, Group 1, Class A</p> <p>Group 1 equipment: Group 1 has intentionally generated and/or use conductively coupled radio-frequency energy which is necessary for the internal functioning of the equipment itself.</p> <p>Class A equipment is equipment suitable for use in all establishments other than domestic and those directly connected to a low voltage power supply network which supplies buildings used for domestic purposes. Caution - There may be potential difficulties in ensuring electromagnetic compatibility in other environments, due to conducted and radiated disturbances.</p> <p>Emissions which exceed the levels required by CISPR 11 can occur when the equipment is connected to a test object.</p> <p>USA (FCC) – 47 CFR 15 subpart B, this product is considered an exempt device per clause 15.103</p> <p>Korea (KCC) Class A Equipment (Industrial Broadcasting & Communication Equipment) This product meets requirements for industrial (Class A) electromagnetic wave equipment and the seller or user should take notice of it. This equipment is intended for use in business environments and not to be used in homes.</p>